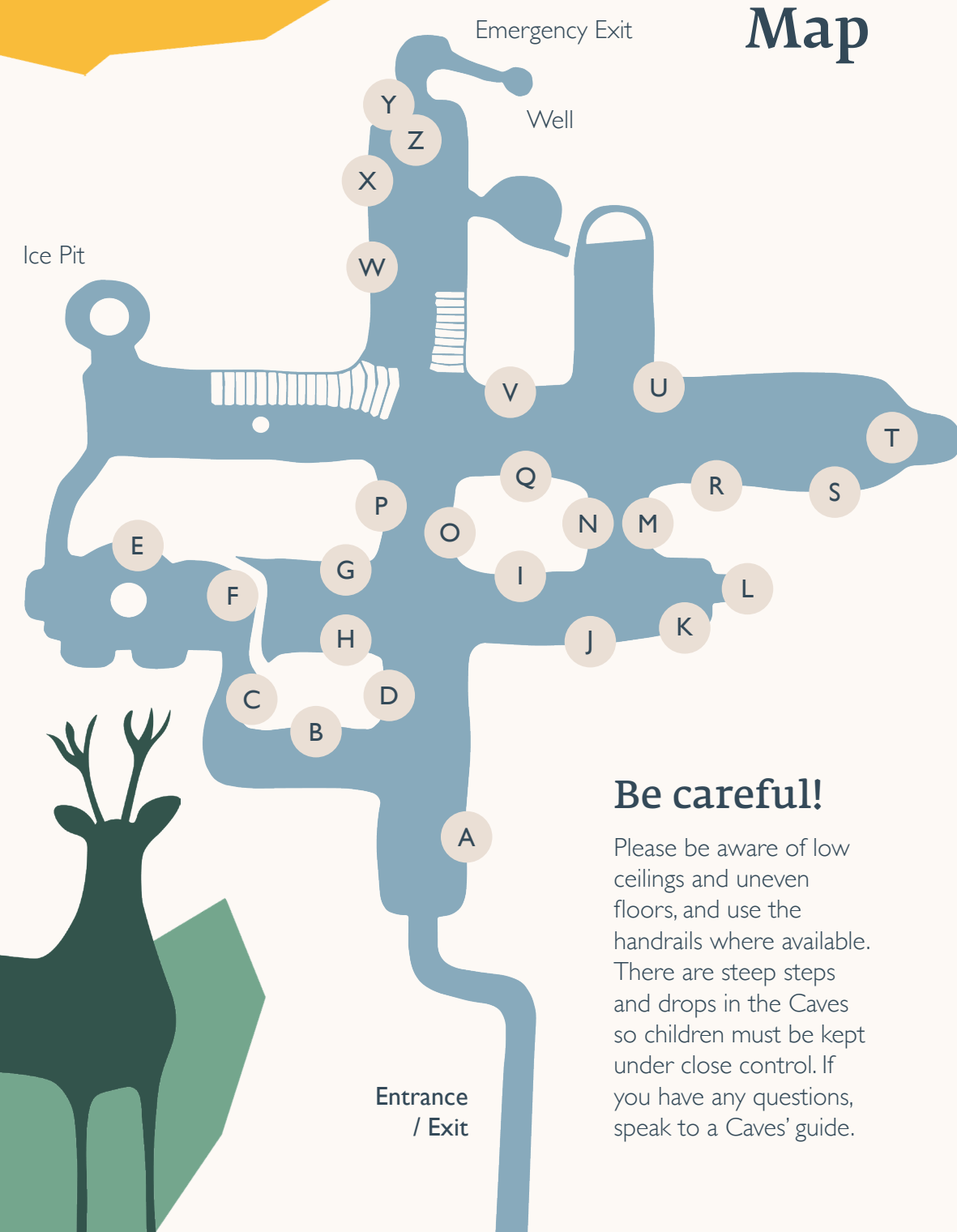


Map

- A The Thanet Hunt
- B Crocodile
- C Fox
- D Vortigern
- E Historic Grafitti
- F God Bless the King
- G The Thanet Giant
- H Bear
- I Donkey
- J Monkeys
- K Consecration Mark
- L Virgin Mary
- M Elephant
- N Rearing Horse
- O Deer
- P Boar
- Q Hippo
- R Lion
- S Ammonite, now lost
- T Older Virgin Mary
- U Evidence of tunnel
- V Running Horse
- W Original Entrance
- X Toby Philpott, remains
- Y Soldiers
- Z Skull, remains



Be careful!

Please be aware of low ceilings and uneven floors, and use the handrails where available. There are steep steps and drops in the Caves so children must be kept under close control. If you have any questions, speak to a Caves' guide.

